

FLORIDA

Where are the charter school deserts in Florida?

We detail the distribution of schools in Florida in order to provide educators and policymakers with information about communities that provide no access to charter schools. Many families lack the financial means to move out of neighborhoods when dissatisfied with their schooling options, so the location of schools is key to ensuring access and equity for all students. Policymakers and parents can use this information to better understand the supply of schooling options in their states and cities—and to press for changes that would improve that supply. Charter operators and authorizers may also find this analysis helpful as they consider where to establish new schools.

What is a charter school desert?

The following maps display where elementary charter schools are located in Florida. A **charter school desert** is three or more contiguous census tracts that have poverty rates greater than 20 percent but that have no charter schools.

Results

Florida has 2,284 public elementary schools, of which 396 are charter schools. The state as a whole has a 14.8 percent poverty rate. Florida has twenty charter school deserts, representing 10 percent of mid- to high-poverty census tracts,¹ located in rural areas in the northern and central parts of the state and in the Miami, Tampa, and Orlando metro areas.

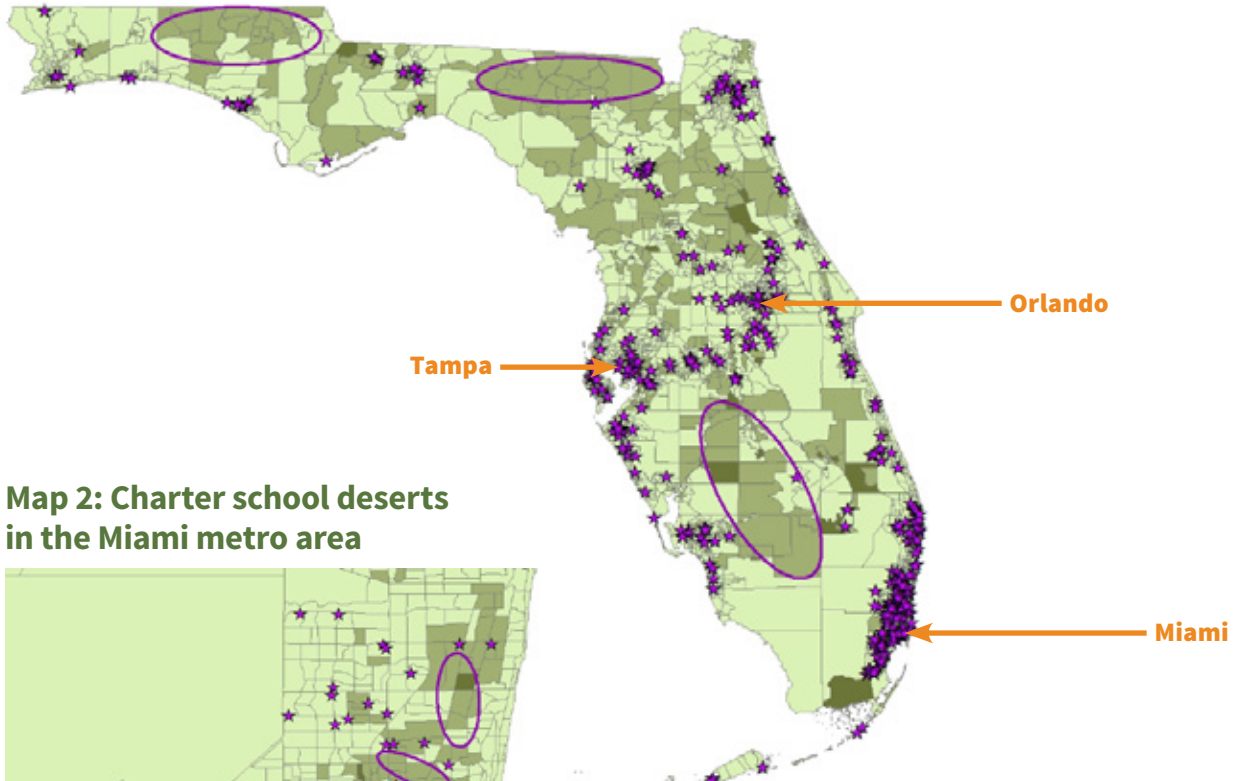
Florida Charter School Deserts by the Numbers

% of the state population living in poverty.....	14.8%
# of public elementary schools.....	2,284
# of charter schools	396
# of census tracts	4,245
# of charter school deserts.....	20
Approximate proportion of mid- to high-poverty census tracts that charter school deserts comprise	10%

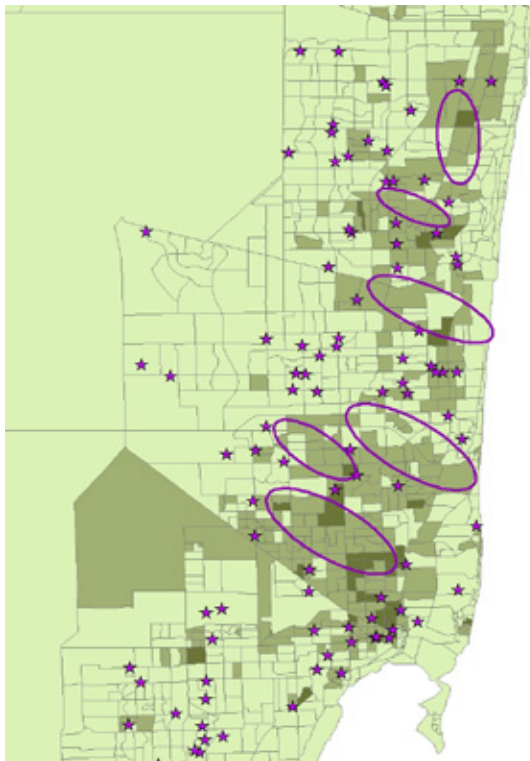
1. Meaning those census tracts in which more than 20 percent of the population lives at or below the poverty line.

Map 1 shows the census tracts and charter schools in Florida. Darker green highlights indicate areas in which more than 20 percent of the population lives in poverty. The statewide map depicts three charter school deserts in rural areas in the northern and central parts of the state;² the charter school deserts in the Miami, Tampa, and Orlando metro areas appear in Maps 2–4. There are six charter school deserts in the Miami metro area.

Map 1: Overview of charter school deserts in Florida



Map 2: Charter school deserts in the Miami metro area



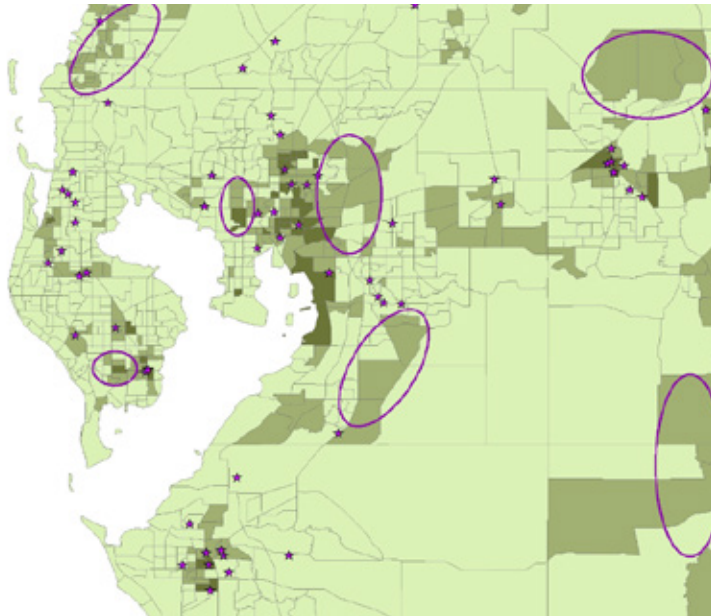
MAP LEGEND	
Poverty Status*	
	0–20%
	21–40%
	41–100%
	★ = Charter School
	○ = Charter School Desert

**Percentage of the population within each tract that lives at or below the poverty line.*

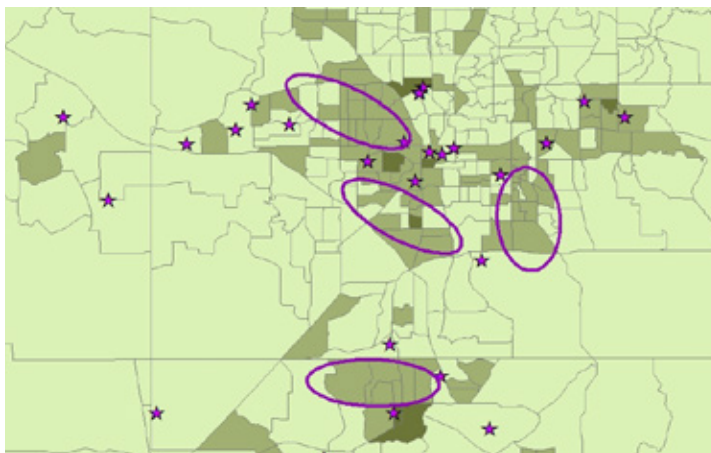
2. Due to the necessarily diminished scale on the state map, all charter school deserts do not appear on it, though they are included on the city metro maps.

There are seven charter school deserts spread throughout the greater Tampa area, including in the eastern and western portions of Tampa Bay, St. Petersburg, and in more rural areas east and southeast of Tampa. There are four charter school deserts in the Orlando metro area.

Map 3: Charter school deserts in the Tampa metro area



Map 4: Charter school deserts in the Orlando metro area



Five Things to Keep in Mind

Readers should note several points. First, we have not tried to describe, analyze, or infer how state policies may impact the distribution of charter schools in Florida—simply to show which high-poverty areas lack such schools. Second, although we focus on school locations, location alone is insufficient to ensure that families have viable access to schools. Nearby schools may not be available to families if they’re filled to capacity, if policies prohibit transfer, or if transportation is unavailable. Third, some rural areas may lack charter schools simply because the population is too thin to support them. Fourth, our report does not address school quality, but the companion website allows users to view schools’ math and English language arts proficiency data. Finally, visually identifying charter school deserts is inevitably vulnerable to human error, as they may be identified differently based on how contiguous census tracts are positioned and how “desert circles” are drawn.

MAP LEGEND	
Poverty Status*	
	0-20%
	21-40%
	41-100%
	= Charter School
	= Charter School Desert

**Percentage of the population within each tract that lives at or below the poverty line.*